



01245 260414 - 250910



[sales@smarttoolsuk.com](mailto:sales@smarttoolsuk.com)

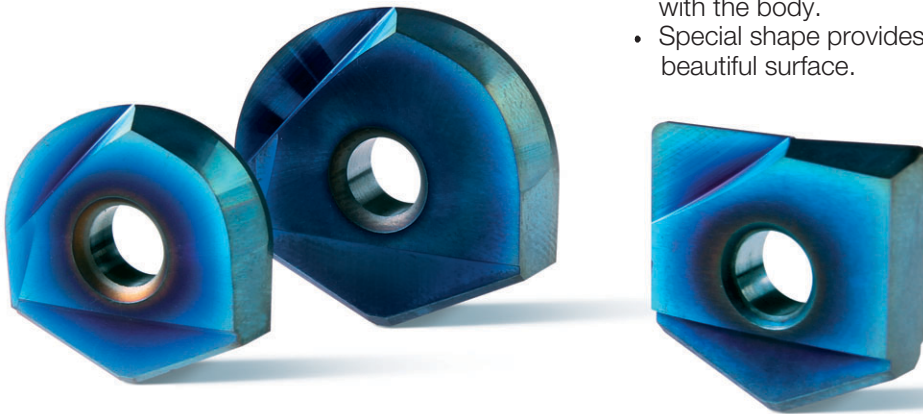


[www.smarttoolsuk.com](http://www.smarttoolsuk.com)



## **LONG** *Life* **HIGH** *Performance*

- Variety cutting process for under HRC62.
- Insert coated TISIN-S provides long cutting life.
- High quality cutting surface by high precision of insert with the body.
- Special shape provides excellent performance and beautiful surface.

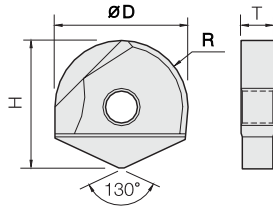
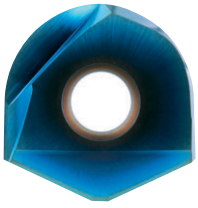


## *FINISHING* **INSERTS**

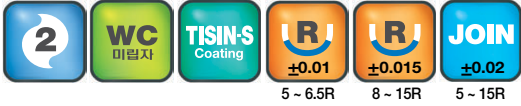


Thank you for JJtools partner and we repay for your favor. We are always trying to do our best for supplying better quality product and reasonable price.

***Your specials are our standards.***

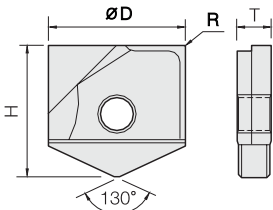
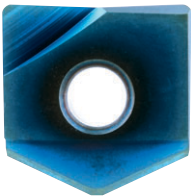


- Inserts for pre-hardened and hardened steel (HRc62~)
- Optimum for various work materials by J-MAX coating.
- Designed for minimizing edge chipping by ball shape.
- Minimize fracturing by high TRS fine(0.3 μm) WC grade.



mm

Order Number	날경 Diameter R × D	높이 Height H	두께 Thickness T	Order Number	날경 Diameter R × D	높이 Height H	두께 Thickness T
2JJINB 100	5R X 10	12.1	2.7	2JJINB 200	10R X 20	20.4	5.2
2JJINB 110	5.5R X 11	12.6	2.7	2JJINB 210	10.5R X 21	20.9	5.2
2JJINB 120	6R X 12	14.6	3.2	2JJINB 250	12.5R X 25	24.1	6.2
2JJINB 130	6.5R X 13	15.1	3.2	2JJINB 260	13R X 26	24.6	6.2
2JJINB 160	8R X 16	16.5	4.2	2JJINB 300	15R X 30	29.1	7.2
2JJINB 170	8.5R X 17	17	4.2				



- Endmills for pre-hardened and hardened steel (HRc62~)
- Good wear resistance by high quality Si-based PVD coating.
- Designed for minimizing edge chipping by corner R shape.
- Minimize fracturing by high TRS fine(0.3 μm) WC grade.

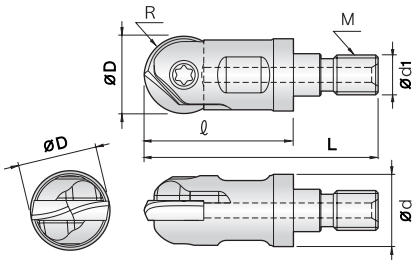


mm

Order Number	날경 Diameter D × R	높이 Height H	두께 Thickness T	Order Number	날경 Diameter D × R	높이 Height H	두께 Thickness T
2JJINC 100 005	10 X R0.5	12.1	2.7	2JJINC 200 005	20 X R0.5	20.4	5.2
2JJINC 100 010	10 X R1	12.1	2.7	2JJINC 200 010	20 X R1	20.4	5.2
2JJINC 110 005	11 X R0.5	12.6	2.7	2JJINC 200 020	20 X R2	20.4	5.2
2JJINC 110 010	11 X R1	12.6	2.7	2JJINC 210 005	21 X R0.5	20.9	5.2
2JJINC 120 005	12 X R0.5	14.6	3.2	2JJINC 210 010	21 X R1	20.9	5.2
2JJINC 120 010	12 X R1	14.6	3.2	2JJINC 210 020	21 X R2	20.9	5.2
2JJINC 120 020	12 X R2	14.6	3.2	2JJINC 250 005	25 X R0.5	24.1	6.2
2JJINC 130 005	13 X R0.5	15.1	3.2	2JJINC 250 010	25 X R1	24.1	6.2
2JJINC 130 010	13 X R1	15.1	3.2	2JJINC 250 020	25 X R2	24.1	6.2
2JJINC 130 020	13 X R2	15.1	3.2	2JJINC 260 005	26 X R0.5	24.6	6.2
2JJINC 160 005	16 X R0.5	16.5	4.2	2JJINC 260 010	26 X R1	24.6	6.2
2JJINC 160 010	16 X R1	16.5	4.2	2JJINC 260 020	26 X R2	24.6	6.2
2JJINC 160 020	16 X R2	16.5	4.2	2JJINC 300 005	30 X R0.5	29.1	7.2
2JJINC 170 005	17 X R0.5	17	4.2	2JJINC 300 010	30 X R1	29.1	7.2
2JJINC 170 010	17 X R1	17	4.2	2JJINC 300 020	30 X R2	29.1	7.2
2JJINC 170 020	17 X R2	17	4.2				



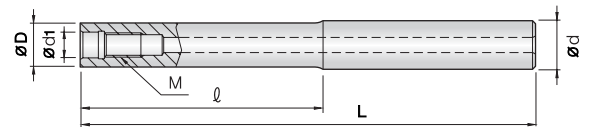
# MHE *Modular Head*



- Can be used for both of ball and corner radius inserts.
- Possible to exchange variety heads for one modular adopter and helps save your purchasing cost.
- Installed modular adopter can change only head without uninstalation, it gives more convenience and it helps save your time.

Order Number	Dimensions (mm)						Insert	Parts	
	M	D	L	l	d	d1		Screw	Wrench
MHE 100 250 M06	M06	10	40	25	9.5	6.5	2JJIN□ 100 / 2JJIN□ 110	SC 100 581142	T10
MHE 120 250 M06	M06	12	40	25	11	6.5	2JJIN□ 120 / 2JJIN□ 130	SC 120 581143	T20
MHE 160 290 M08	M08	16	45	29	14.5	8.5	2JJIN□ 160 / 2JJIN□ 170	SC 160 581144	T20
MHE 200 330 M10	M10	20	55	33	18	10.5	2JJIN□ 200 / 2JJIN□ 210	SC 200 581145	T25
MHE 250 390 M12	M12	25	60	39	22.5	12.5	2JJIN□ 250 / 2JJIN□ 260	SC 250 581146	T30
MHE 300 430 M16	M16	30	70	43	28	17	2JJIN□ 300	SC 300 581147	T30

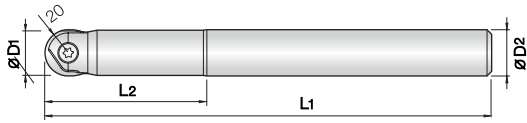
# CMA *Carbide Modular Adopter*



Order Number	Dimensions (mm)					
	M	D	d	d1	l	L
CMA100 240 114	M06	9.7	10	6.5	24	114
CMA120 240 129	M06	11	12	6.5	24	129
CMA160 300 130	M08	14.5	16	8.5	30	130
CMA160 300 160	M08	14.5	16	8.5	30	160
CMA160 300 200	M08	14.5	16	8.5	30	200
CMA160 300 250	M08	14.5	16	8.5	30	250
CMA200 500 170	M10	18.5	20	10.5	50	170
CMA200 500 220	M10	18.5	20	10.5	50	220
CMA200 500 270	M10	18.5	20	10.5	50	270
CMA250 650 265	M12	23	25	12.5	65	265
CMA250 650 315	M12	23	25	12.5	65	315
CMA300 800 260	M16	28	32	17	80	260
CMA300 800 360	M16	28	32	17	80	360



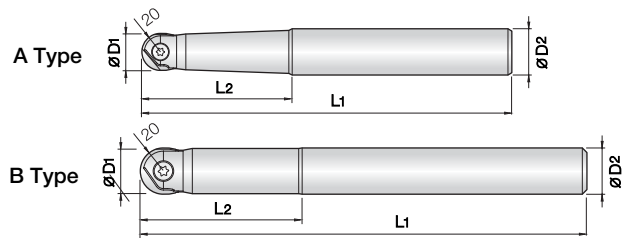
# CICF Carbide Indexable Cutter for Finishing



- Can be used for both of ball and corner radius inserts.
- Suitable for high speed cutting and high precise cutting due to same toughness as solid tools.
- Available repairing tool holders at JJ TOOLS co., Ltd when broken problem.
- Available stable machining due to minimized vibration on carbide holders.

Order Number	Dimensions (mm)				Insert	Parts	
	D1	D2	L2	L1		Screw	Wrench
CICF100 350 150	10	10	35	150	2JJIN □ 100 / 2JJIN □ 110	SC 100 581142	T10
CICF120 450 160	12	12	45	160	2JJIN □ 120 / 2JJIN □ 130	SC 120 581143	T20
CICF160 600 200	16	16	60	200	2JJIN □ 160 / 2JJIN □ 170	SC 160 581144	T20
CICF160 600 230	16	16	60	230	2JJIN □ 160 / 2JJIN □ 170	SC 160 581144	T20
CICF200 700 220	20	20	70	220	2JJIN □ 200 / 2JJIN □ 210	SC 200 581145	T25
CICF250 800 250	25	25	80	250	2JJIN □ 250 / 2JJIN □ 260	SC 250 581146	T30
CICF250 800 300	25	25	80	300	2JJIN □ 250 / 2JJIN □ 260	SC 250 581146	T30

# ICF Indexable Cutter for Finishing



- Can be used for both of ball and corner radius inserts.

Order Number	Dimensions (mm)					Insert	Parts	
	D1	D2	L2	L1	Type		Screw	Wrench
ICF100 250 100 S12	10	12	25	100	A	2JJIN □ 100 / 2JJIN □ 110	SC 100 581142	T10
ICF100 500 150 S16	10	16	50	150	A	2JJIN □ 100 / 2JJIN □ 110	SC 100 581142	T10
ICF120 300 110 S12	12	12	30	110	B	2JJIN □ 120 / 2JJIN □ 130	SC 120 581143	T20
ICF120 600 160 S16	12	16	60	160	A	2JJIN □ 120 / 2JJIN □ 130	SC 120 581143	T20
ICF160 500 130 S20	16	20	50	130	A	2JJIN □ 160 / 2JJIN □ 170	SC 160 581144	T20
ICF160 600 220 S16	16	16	60	220	B	2JJIN □ 160 / 2JJIN □ 170	SC 160 581144	T20
ICF160 650 160 S20	16	20	65	160	A	2JJIN □ 160 / 2JJIN □ 170	SC 160 581144	T20
ICF200 700 220 S20	20	20	70	220	B	2JJIN □ 200 / 2JJIN □ 210	SC 200 581145	T25
ICF200 700 250 S20	20	20	70	250	B	2JJIN □ 200 / 2JJIN □ 210	SC 200 581145	T25
ICF200 800 180 S25	20	25	80	180	A	2JJIN □ 200 / 2JJIN □ 210	SC 200 581145	T25
ICF250 700 220 S25	25	25	70	220	B	2JJIN □ 250 / 2JJIN □ 260	SC 250 581146	T30
ICF250 800 250 S25	25	25	80	250	B	2JJIN □ 250 / 2JJIN □ 260	SC 250 581146	T30
ICF250 800 300 S25	25	25	80	300	B	2JJIN □ 250 / 2JJIN □ 260	SC 250 581146	T30
ICF300 100 250 S32	30	32	10	250	A	2JJIN □ 300	SC 300 581147	T30
ICF300 100 300 S32	30	32	10	300	A	2JJIN □ 300	SC 300 581147	T30
ICF300 100 350 S32	30	32	10	350	A	2JJIN □ 300	SC 300 581147	T30



Bolt Order Number	Screw	Bolt Order Number	Screw
SC 100 581142	T10	SC 250 581146	T30
SC 120 581143	T20	SC 300 581147	T30
SC 160 581144	T20		
SC 200 581145	T25		



01245 260414 - 250910



sales@smarttoolsuk.com



www.smarttoolsuk.com